

PRESHA
QUALITY AUSTRALIAN MADE BOILERS

PRESHA

Hot Water Boilers

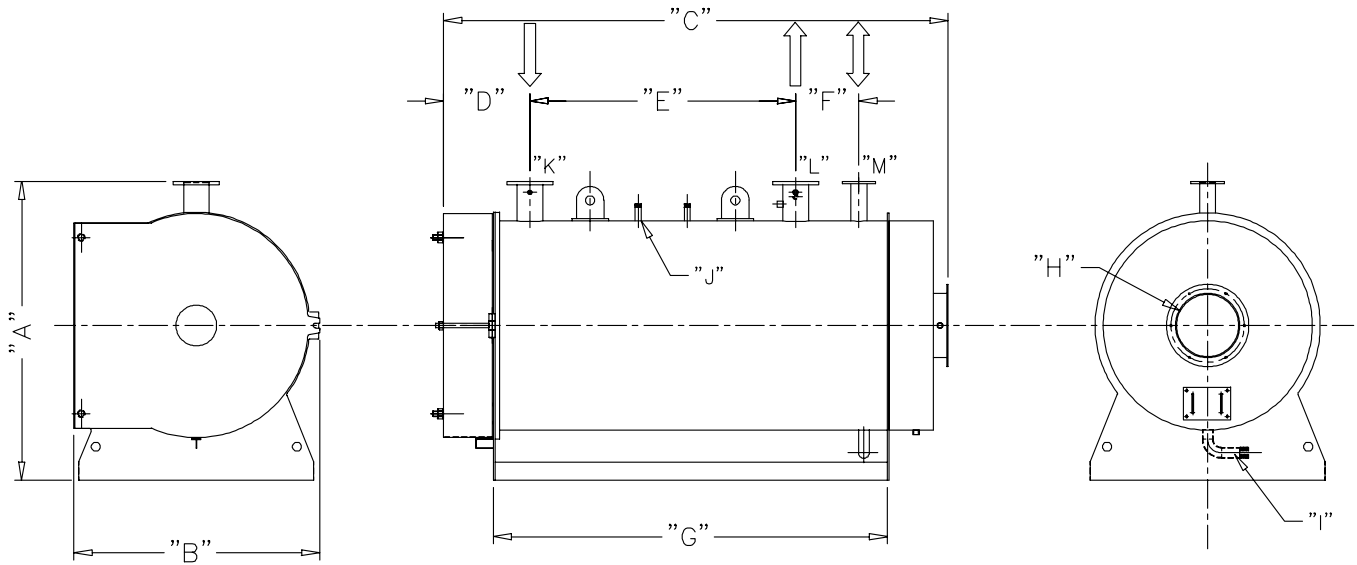


www.confas.com.au

CONSOLIDATED
FIRE & STEAM

Hot Water Boilers

PRESHA
QUALITY AUSTRALIAN MADE BOILERS



MODEL	150	200	300	400	500	650	750	800	1000	1250	1500	1750	2000	2500	3000	4000
OUTPUT CAPACITY kW	150	200	300	400	500	650	750	800	1000	1250	1500	1750	2000	2500	3000	4000
NOMINAL WATER CONTENT LITRE	220	221	455	750	824	920	980	1080	1250	1330	1400	1820	2490	2650	3100	6100
MJ/HR	675	900	1350	1800	2250	2925	3375	3600	4500	5625	6750	7875	9000	11250	13500	18000
OVERALL HEIGHT "A"	1090	1191	1305	1525	1525	1672	1672	1672	1813	1833	1833	2065	2065	2100	2650	2782
OVERALL WIDTH "B"	870	870	1050	1150	1240	1350	1350	1350	1430	1490	1520	1700	1720	1900	2000	2405
OVERALL LENGTH "C"	1615	1750	2050	2250	2370	2520	2665	2790	3200	3150	3310	3750	3790	3950	4140	5002
CONNECTION DISTANCE "D"	315	315	360	360	399	477	477	477	461	461	461	598	598	598	598	759
CONNECTION DISTANCE "E"	668	730	991	1130	1150	1200	1445	1470	1895	1895	1860	1969	2088	2211	2448	2851
CONNECTION DISTANCE "F"	160	220	250	250	250	250	250	250	250	250	300	450	450	450	450	571
CASE LENGTH "G"	1200	1318	1516	1820	1820	1920	2065	2180	2600	2600	2620	3014	3136	3295	3496	4100
FLUE BORE "H"	200	200	250	250	300	350	350	350	400	450	500	500	500	600	600	600
DRAIN DIAMETER "I"	25	25	25	25	25	25	25	25	25	25	25	25	32	32	32	32
SAFETY VALVE CONNECTION "J"	25	25	25	25	25	25	25	25	2 x 25	2 x 25	2 x 25	2 x 32	2 x 32	2 x 32	2 x 32	3 x 60
INLET "K"	65	65	80	80	80	125	125	125	125	125	150	150	150	200	200	200
OUTLET "L"	65	65	80	80	80	125	125	125	125	125	150	150	150	200	200	200
VENT "M"	40	40	50	50	50	80	80	80	80	80	100	125	125	150	150	150
NOMINAL DRY MASS KG	400	470	590	990	1150	1380	1590	1610	2290	2440	3010	3350	3350	5490	5490	11977
WATER FLOW RATE LITRES/SEC $\Delta t = 15^{\circ}\text{C}$	2.39	3.19	4.78	6.38	7.98	10.37	11.97	12.76	15.96	19.94	23.93	27.92	31.91	39.89	47.87	63.84

Maximum working pressure standard units = 500 kpa Maximum working water temperature standard units < 90°C.
Design code standard units = AS1210 (sect 3.32). Consolidated Fire & Steam reserves the right to change the specifications of its products without prior notice in the interests of ongoing product improvement.



**32 Research Drive,
Croydon South, VIC 3136**

Ph: (03) 8761 6677

Fax: (03) 8761 6699

Email: admin@confas.com.au

www.confas.com.au

Distributed by