

# R600

## High Efficiency Condensing Boilers

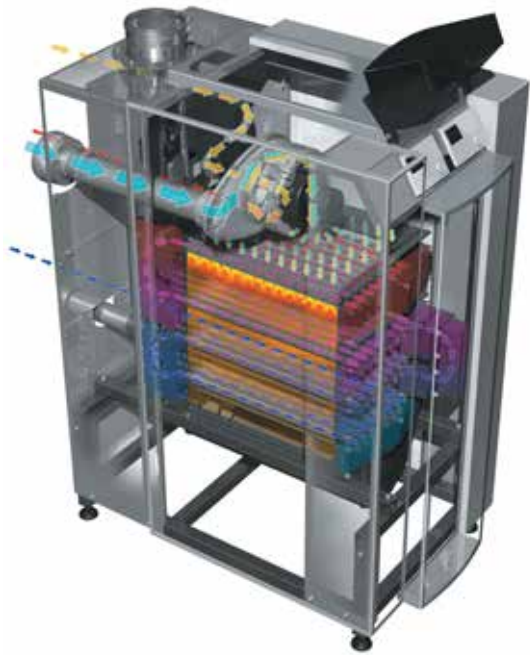


[www.confas.com.au](http://www.confas.com.au)



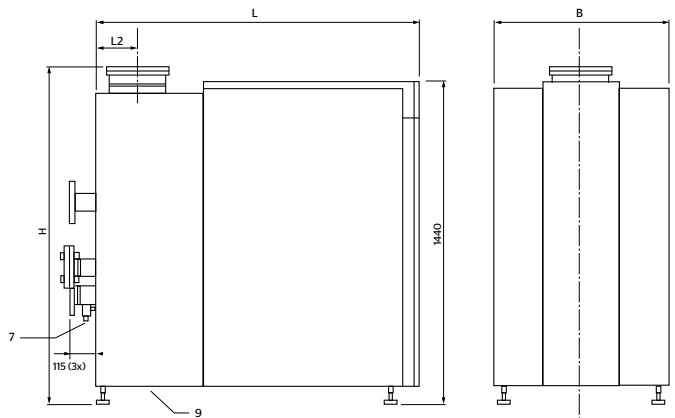
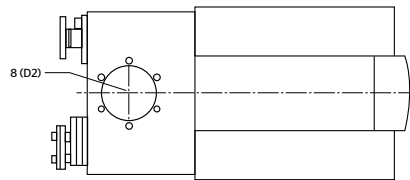
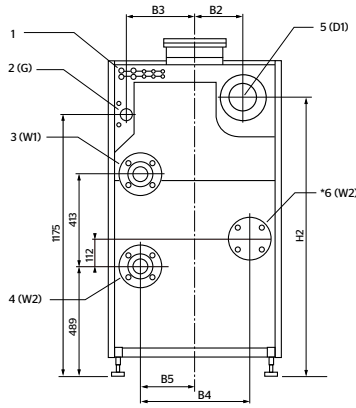
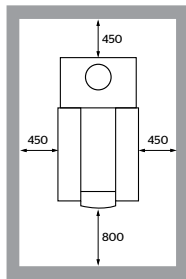
CONSOLIDATED  
**FIRE & STEAM**

# R600 High Efficiency



Rendamax R600, a range of gas-fired condensing, high efficiency, Low NOx boilers, specially designed for today's commercial needs of high output with clean emissions, all from a compact unit. This brochure relates to Rendamax R600 units that can return outputs from 142 kW to 545kW per unit. Sensibly engineered to allow for quick and easy maintenance without the need for specialist tools, small footprint for greater siting flexibility, Rendamax R600 boilers include a wealth of standard operating features to provide optimum efficiency and low running costs.

- Ultra high efficiency, fully condensing
- low emissions
- Direct-on-boiler weather compensation (optional)
- Comprehensive control panel
- Room sealed flue (optional)
- Stainless Steel Heat Exchanger
- Optional matched controls for optimum efficiency
- Safety valve & system pump
- 5 Year Guarantee
- Optional variable speed pump



1 Electrical connections  
2 Gas supply

3 Water supply  
4 Water return (cold)

5 Air intake  
6 Water 2nd return (hot)

7 Boiler water drain valve  
8 Flue gas outlet

9 Condense drain flexible hose 25mm diameter

Dimension	R601	R602	R603	R604	R605	R606	R607
L	mm	1105	1260	1470	1220	1435	1735
L2	mm	127.5	127.5	137.5	137.5	187.5	187.5
H	mm	1480	1480	1500	1500	1500	1500
H2	mm	1120	1130	1130	1150	1245	1245
B	mm	670	670	670	770	770	770
B2	mm	225	235	235	235	215	215
B3	mm	260	260	260	310	310	310

Dimension	R601	R602	R603	R604	R605	R606	R607
B4	mm	260	260	260	490	490	490
B5	mm	130	130	130	245	245	245
D1	mm(dia)	130	150	150	150	200	200
D2	mm(dia)	150	150	200	200	250	250
W1	R"/DN	R2"	R2"	R2"	DN65 PN16	DN65 PN16	DN65 PN16
W2	R"/DN	R2"	R2"	R2"	DN65 PN16	DN65 PN16	DN65 PN16
G	R	3/4"	1"	1"	1"	1 1/2"	1 1/2"



# R600 High Efficiency



Rendamax R600 boilers use a downward firing pre-mix, watercooled burner that is fully variable from 25% to 100% which, combined with precise Gas to Air mixing results in ultra clean emissions in the range of < 53 mg/kWh NOx (30ppm DAF), < 19 mg/kWh CO (15 ppm DAF). This coupled with direct-on-boiler weather compensation allows efficiencies in the range of 104.5% nett to be returned.

The high efficiency Rendamax R600 boilers can be installed in conjunction with a variety of matched intelligent controls for either an individual appliance or a number of appliances, to optimize fuel consumption and therefore energy conservation.

		R601	R602	R603	R604	R605	R606	R607
Nominal heat output at 80-60°C max/min*	kW	142.1/23.9	190.1/40.6	237.2/40.6	285.2/40.6	384.5/79.6	480.6/79.6	545.1/79.7
Nominal heat output at 40/30°C max/min*	kW	149.2/26.4	201.6/45.6	251.4/45.6	302.3/45.6	403.1/88.4	503.9/88.4	571.5/88.4
Nominal heat input Hi max/min*	kW	145.0/24.5	194.0/41.5	242.0/41.5	291.0/41.5	388.0/80.5	485.0/80.5	550.0/80.5
Efficiency at 80/60°C	%	98.0						
Efficiency at 40/30°C	%	103.9						
Annual efficiency (NNG 75/60°C)	%	106.8						
Annual efficiency (NNG 40/30°C)	%	110.4						
Standstill losses (Twater = 70°C)	%	0.21	0.18	0.17	0.16	0.15	0.14	0.13
Max. condensate flow	l/h	11	15	19	22	30	37	42
Gas consumption H-gas max/min (10,9 kWh/m3)	m³/h	13.3/2.3	17.8/3.8	22.2/3.8	26.7/3.8	35.6/7.4	44.5/7.4	50.5/7.4
Gas pressure H-gas	mbar	17/20						
Maximum gas pressure	mbar	100						
Flue gas temperature at 80/60°C max/min	°C	78/61						
NOx level max/min	mg/kWh	35/15						
Max. permissible flue resistance max/min	Pa	160/10	160/10	200/10	200/10	200/10	250/10	250/10
Water volume	l	27	31	35	61	68	75	82
Water pressure max/min	bar	8/1						
Max. water temperature (High limit thermostat)	°C	95						
Maximum temperature setpoint	°C	90						
Nominal water flow at dT=20K	m³/h	6.1	8.1	10.2	12.2	16.3	20.4	23.1
Hydraulic resistance at nominal water flow	kPa	10	18	28	15	27	42	55
Electrical connection	V	230/400						
Frequency	Hz	50						
Mains connection fuse	A	16						
IP class	-	IP20						
Power consumption boiler max/min (excl. pump)	W	158/43	200/35	230/35	260/35	470/61	650/61	770/61
Weight (empty)	kg	295	345	400	465	535	590	650
Noise level at 1 meter distance	dB(A)	59						
Ionisation current minimum	µA	6						
PH value condensate	-	3.2						
CE certification code	-	CE-0063BS3840						



**32 Research Drive,  
Croydon South, VIC 3136**

Ph: (03) 8761 6677

Fax: (03) 8761 6699

Email: admin@confas.com.au

[www.confas.com.au](http://www.confas.com.au)

Distributed by

R600